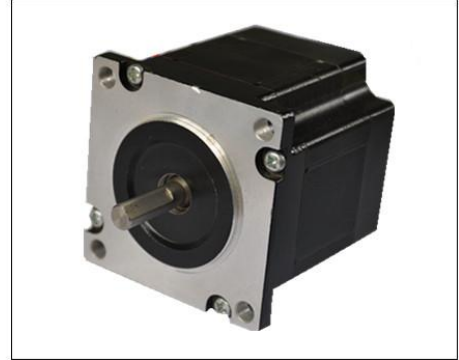


## 1.8°Size 57mm(23H) High Torque Hybrid Stepping Motor

### Technical Parameters

Step Angle Accuracy	Specifications
Resistance Accuracy	±5%
Inductance Accuracy	±10%
Temperature Rise	±20%
Ambient Temperature	80 °C Max.
Insulation Resistance	-10 °C -+50 °C
Dielectric Strength	100MΩMin.500 VDC
Shaft Radial Play	500VAC
Shaft Axial Play	0.06Max.(450 g-load)
Insulation Class	0.08Max.(450 g-load)
Step Angle Accuracy	Class B 130°



### Technical Specifications

Model No	Holding torque	Current /Phase	Resistance/Phase	Step Angle	Rotor Inertia	Weight	Length
	Nm	A	Ω	°	gcm <sup>2</sup>	kg	mm
60BYGH255-2004A	1.5	2	1.8	1.8 °	1000	1.7	55
60BYGH255-3004A	1.5	3	0.8	1.8 °	1000	1.7	55
60BYGH255-4004A	1.5	4	0.4	1.8 °	1000	1.7	55
60BYGH280-2004A	2.5	2	1.2	1.8 °	1600	2.4	80
60BYGH280-3004A	2.5	3	0.6	1.8 °	1600	2.4	80
60BYGH280-4004A	2.5	4	0.3	1.8 °	1600	2.4	80
60BYGH290-3004A	3.0	3	1.3	1.8 °	2500	3.0	90
60BYGH290-4004A	3.0	4	0.7	1.8 °	2500	3.0	90
60BYGH290-5004A	3.0	5	0.4	1.8 °	2500	3.0	90
60BYGH2100-3004A	3.5	3	1.6	1.8 °	3200	4.0	100
60BYGH2100-4004A	3.5	4	0.8	1.8 °	3200	4.0	100
60BYGH2100-5004A	3.5	5	0.5	1.8 °	3200	4.0	100

# Dimension

