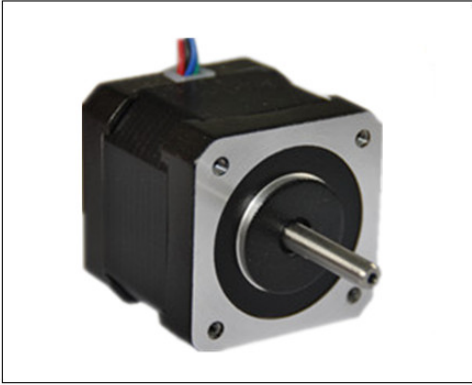




# 1.8°Size 42mm(17H) High Torque Hybrid Stepping Motor

www.sihengmotor.com

## Technical Parameters

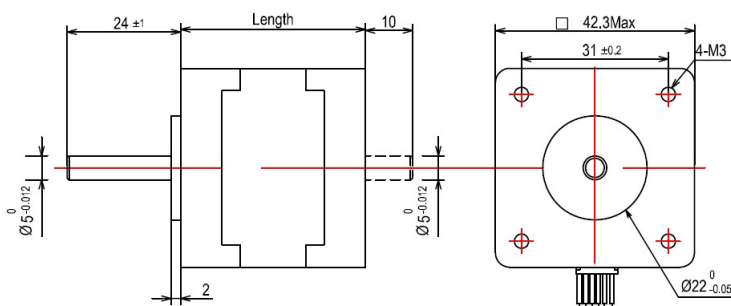


Item	Specifications
Step Angle Accuracy	±5%
Resistance Accuracy	±10%
Inductance Accuracy	±20%
Temperature Rise	80°C Max.
Ambient Temperature	-10°C~+50°C
Insulation Resistance	100MΩMin.500 VDC
Dielectric Strength	500VAC
Shaft Radial Play	0.06Max.(450 g-load)
Shaft Axial Play	0.08Max.(450 g-load)
Insulation Class	Class B 130°

## Technical Specification

Model No		Rated Voltage	Current/Phase	Resistance/Phase	Inductance/Phase	Holding Torque		#of leads	Rotor Inertia	Weight	Length
Single Shaft	Double Shaft	V	A	Ω	mH	Oz-in	kg-cm		g-cm <sup>2</sup>	Kg	mm
42BYGH33-0956A	42BYGH33-0956	4	0.95	4.2	4	22	1.58	6	35	0.22	33
42BYGH33-0406A	42BYGH33-0406	6	0.6	10	9.5	22	1.58	6	35	0.22	33
42BYGH33-0316A	42BYGH33-0316	12	0.31	38.5	33	22	1.58	6	35	0.22	33
42BYGH33-1334A	42BYGH33-1334	2.8	1.33	2.1	4.2	30	2.2	4	35	0.22	33
42BYGH39-1206A	42BYGH39-1206	4	1.2	3.3	4	36	2.59	6	54	0.28	39
42BYGH39-0806A	42BYGH39-0806	6	0.8	7.5	7.5	36	2.59	6	54	0.28	39
42BYGH39-0406A	42BYGH39-0406	12	0.4	30	30	36	2.59	6	54	0.28	39
42BYGH39-1684A	42BYGH39-1684	2.8	1.68	1.65	4	36	2.59	4	54	0.28	39
42BYGH47-2104A	42BYGH47-2104	3.4	2.1	1.6	3	44	3.17	4	68	0.35	47
42BYGH47-0806A	42BYGH47-0806	6	0.8	7.5	10	44	3.17	6	68	0.35	47
42BYGH47-0406A	42BYGH47-0406	12	0.4	30	38	44	3.17	6	68	0.35	47
42BYGH47-1684A	42BYGH47-1684	2.8	1.68	1.65	4.1	62	4.4	4	68	0.35	47
42BYGH60-1004A	62BYGH60-0804	6	1.00	6.0	10	85	6.0	4	80	0.48	60
42BYGH60-1684A	42BYGH60-1684	3.6	1.68	3.0	6.0	85	6.0	4	80	0.48	60

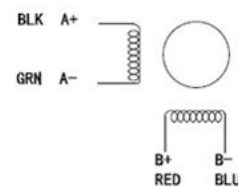
## Dimension



## Wiring Diagram

### Wiring Diagram

#### 4LEADES



#### 6LEADES

